



## 30 Willow Road, South Wootton PE30 3JW

£450,000

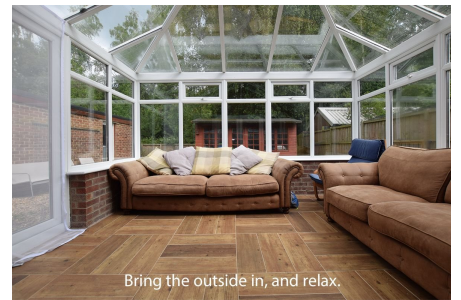
5 3 3



Space for all the family to cook up a storm



If you're looking for privacy...you've found it



Bring the outside in, and relax.

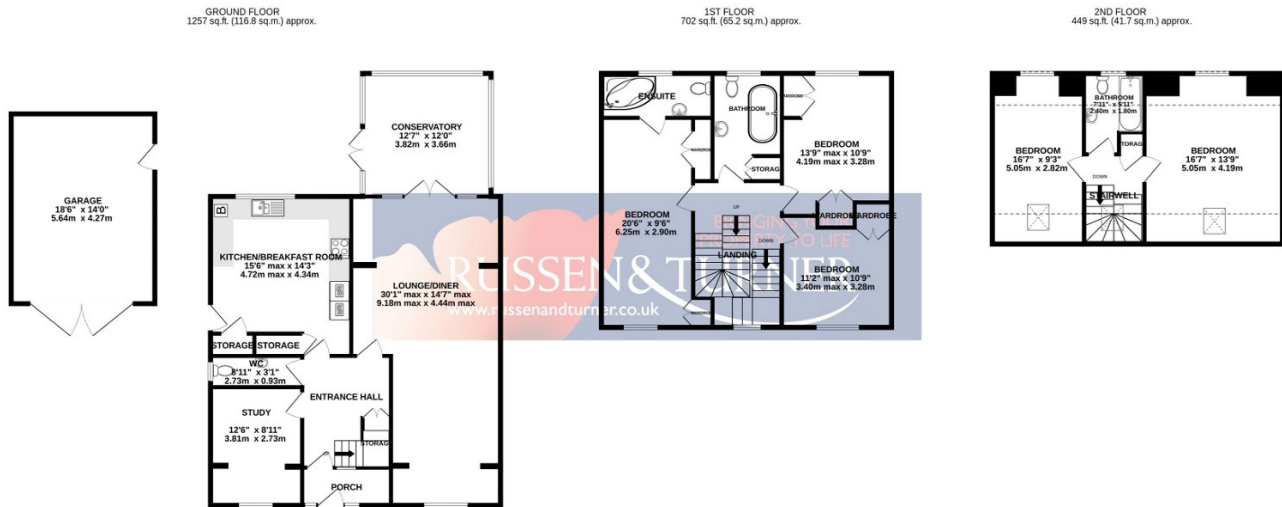
**Need more space for your growing family?** Take a look at the accommodation offered by this spacious, 5 bedroom house which is located in the sought after village of South Wootton. Backing onto woodland offers fantastic privacy and with 3 bath/shower rooms plus a ground floor W.C., there should be no queuing in the mornings.





## Key Features

- Detached house
- 3 Bathrooms
- Conservatory
- Desirable location
- Ample parking
- 5 Double bedrooms
- Ground floor W.C.
- Large garage
- Backs onto woodland
- Ideal for the growing family



TOTAL FLOOR AREA: 2408 sq.ft. (223.7 sq.m.) approx.

Whilst every attempt has been made to ensure the accuracy of the floorplan contained here, measurements of doors, windows, rooms and any other items are approximate and no responsibility is taken for any error, omission or mis-statement. This plan is for illustrative purposes only and should be used as such by any prospective purchaser. The services, systems and appliances shown have not been tested and no guarantee as to their operability or efficiency can be given.  
Made with Metropix ©2024

